



Vienna Consulting
Engineers ZT GmbH

Health Monitoring of Bridges Applied to the Halic Metro Bridge in Istanbul

Helmut **WENZEL**

September 2015, Istanbul



Halic Metro Bridge

Construction



Halic Metro Bridge

Construction



Halic Metro Bridge

Construction



Halic Metro Bridge

Construction



Halic Metro Bridge

Construction



Halic Metro Bridge

Construction



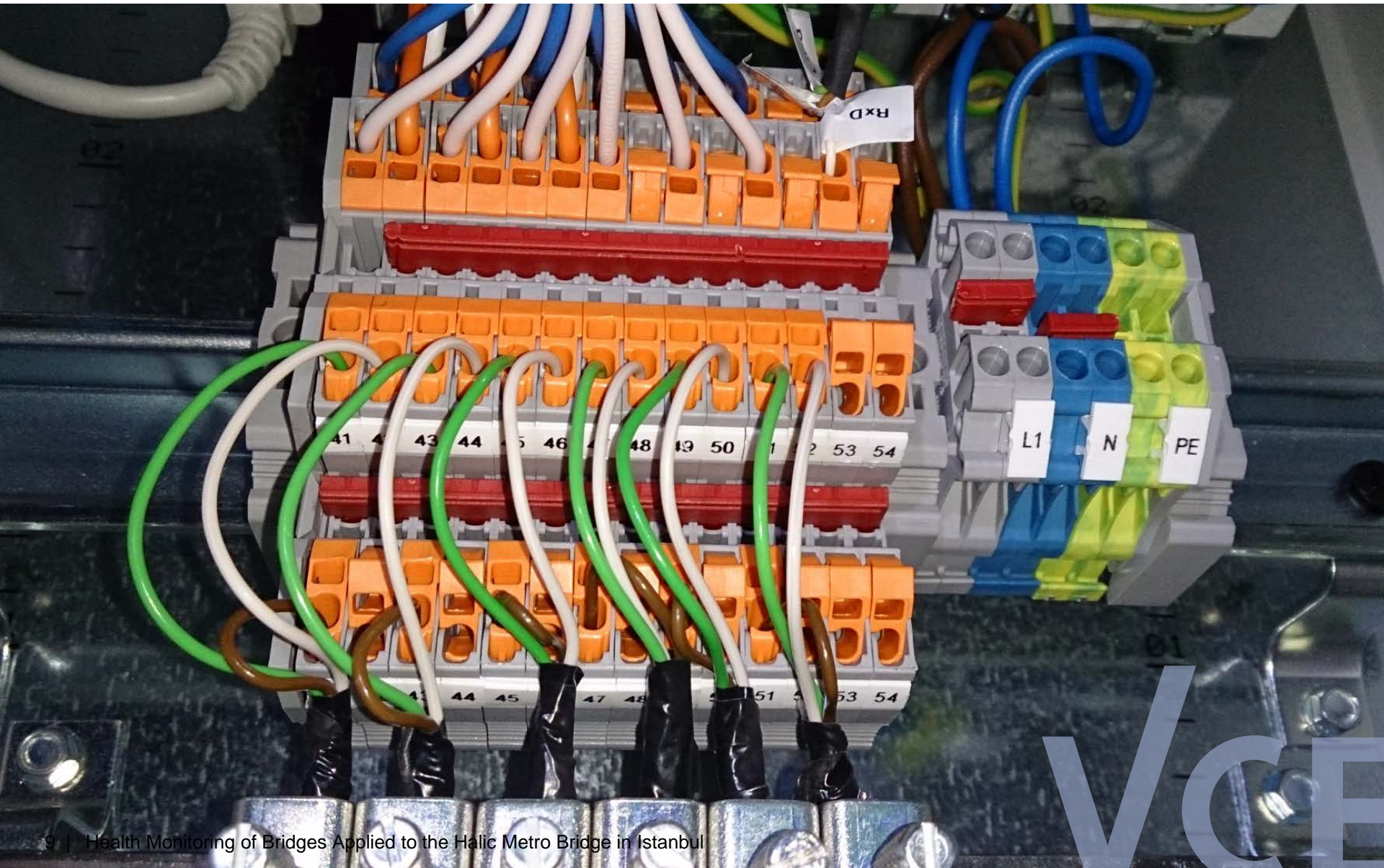
Halic Metro Bridge

Construction



Halic Metro Bridge

Construction



Halic Metro Bridge

Construction



Halic Metro Bridge

Construction



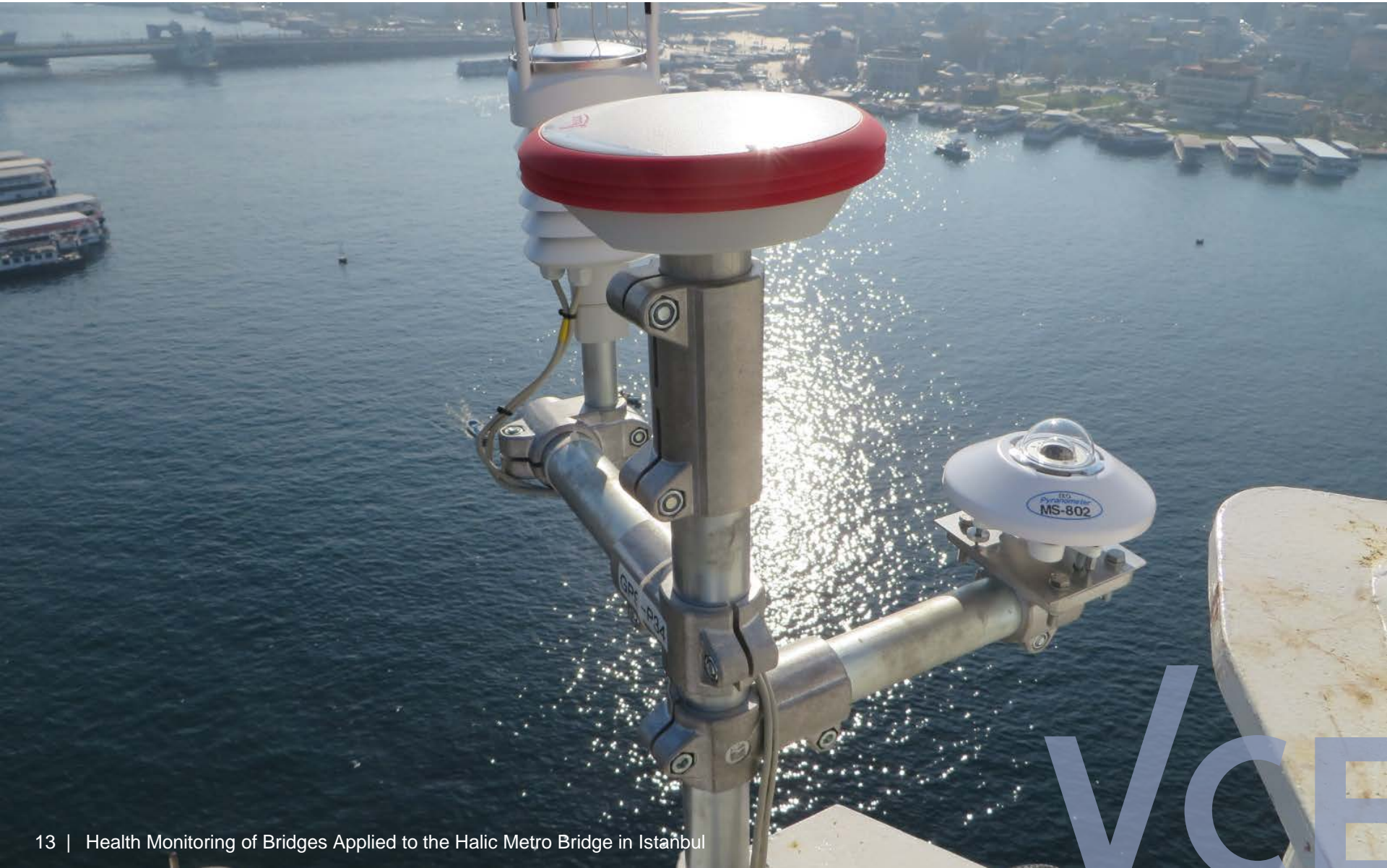
Halic Metro Bridge

Construction



Halic Metro Bridge

Construction



Halic Metro Bridge Construction



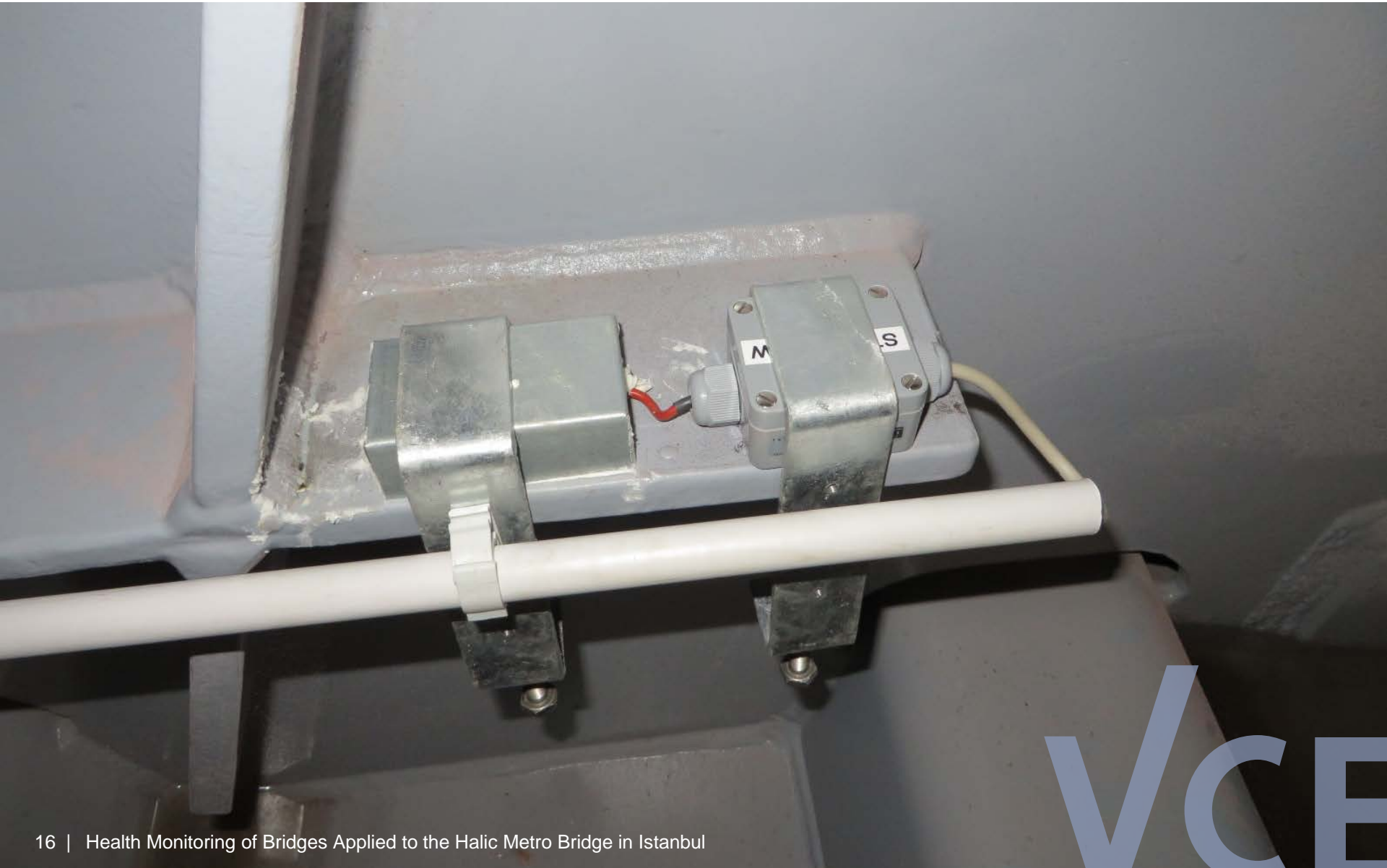
Halic Metro Bridge

Construction



Halic Metro Bridge

Construction



Halic Metro Bridge Construction



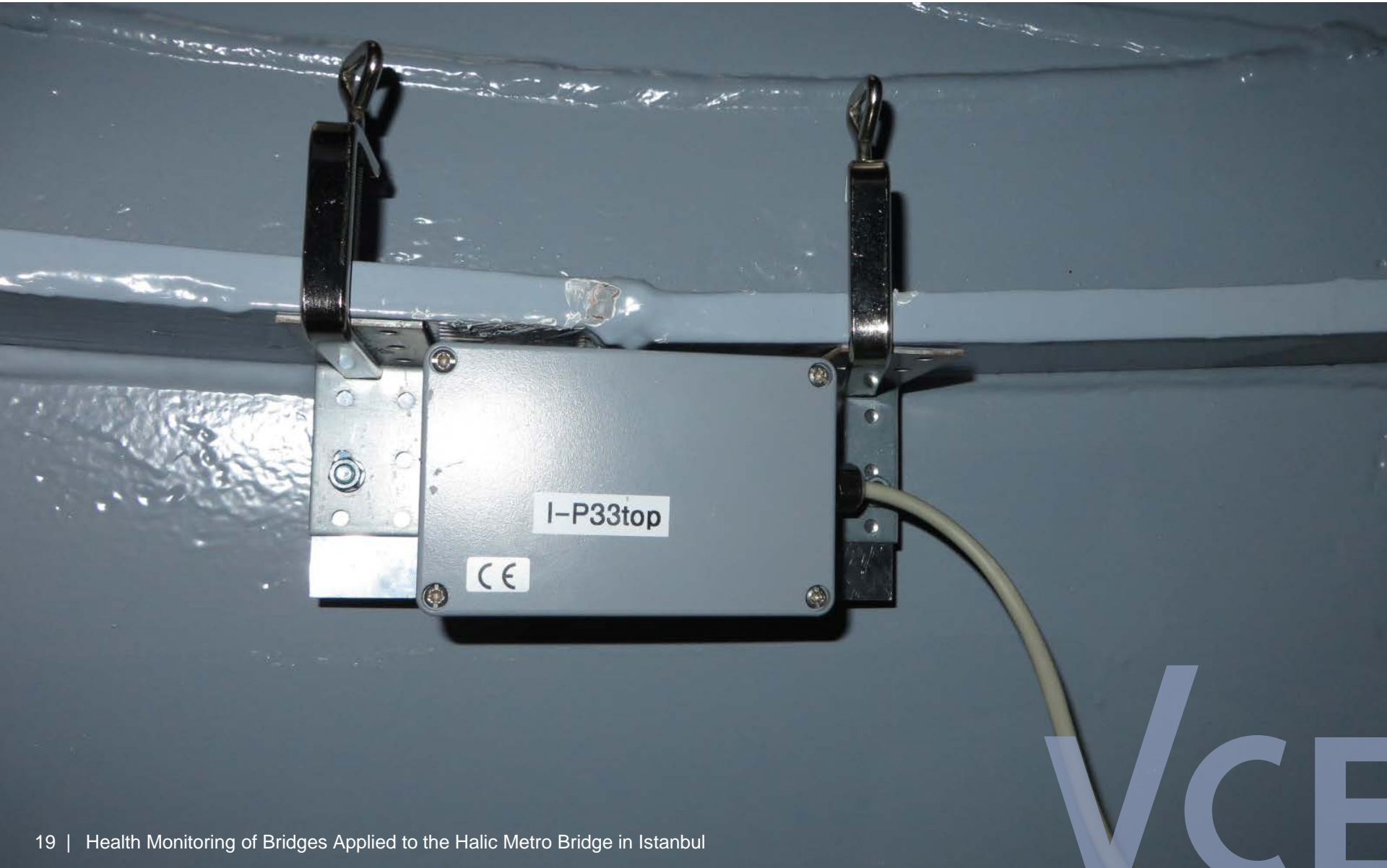
Halic Metro Bridge

Construction

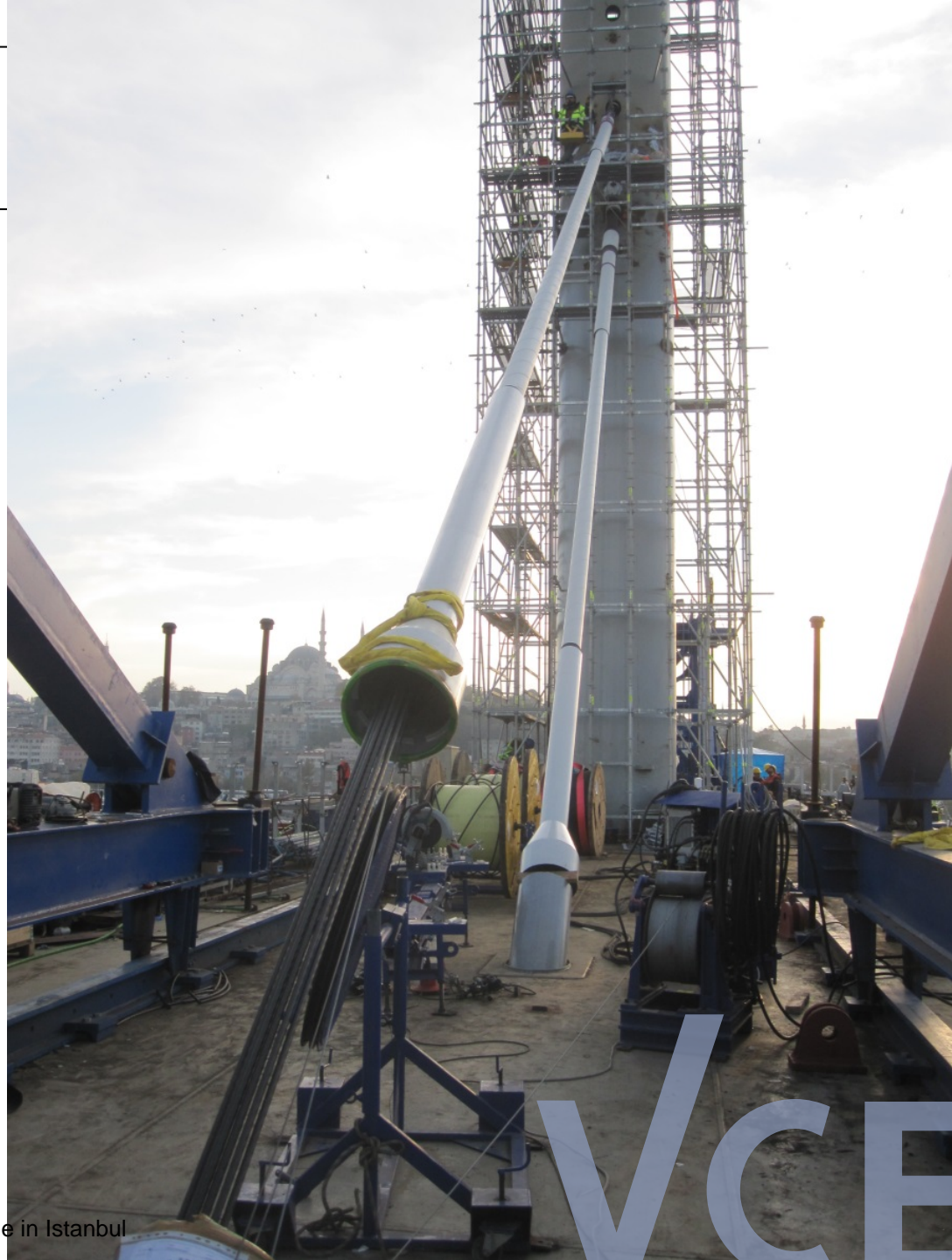


Halic Metro Bridge

Construction



Halic Metro Bridge Construction



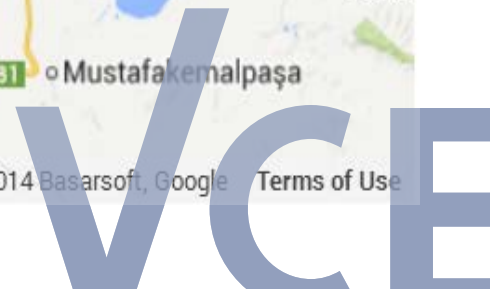
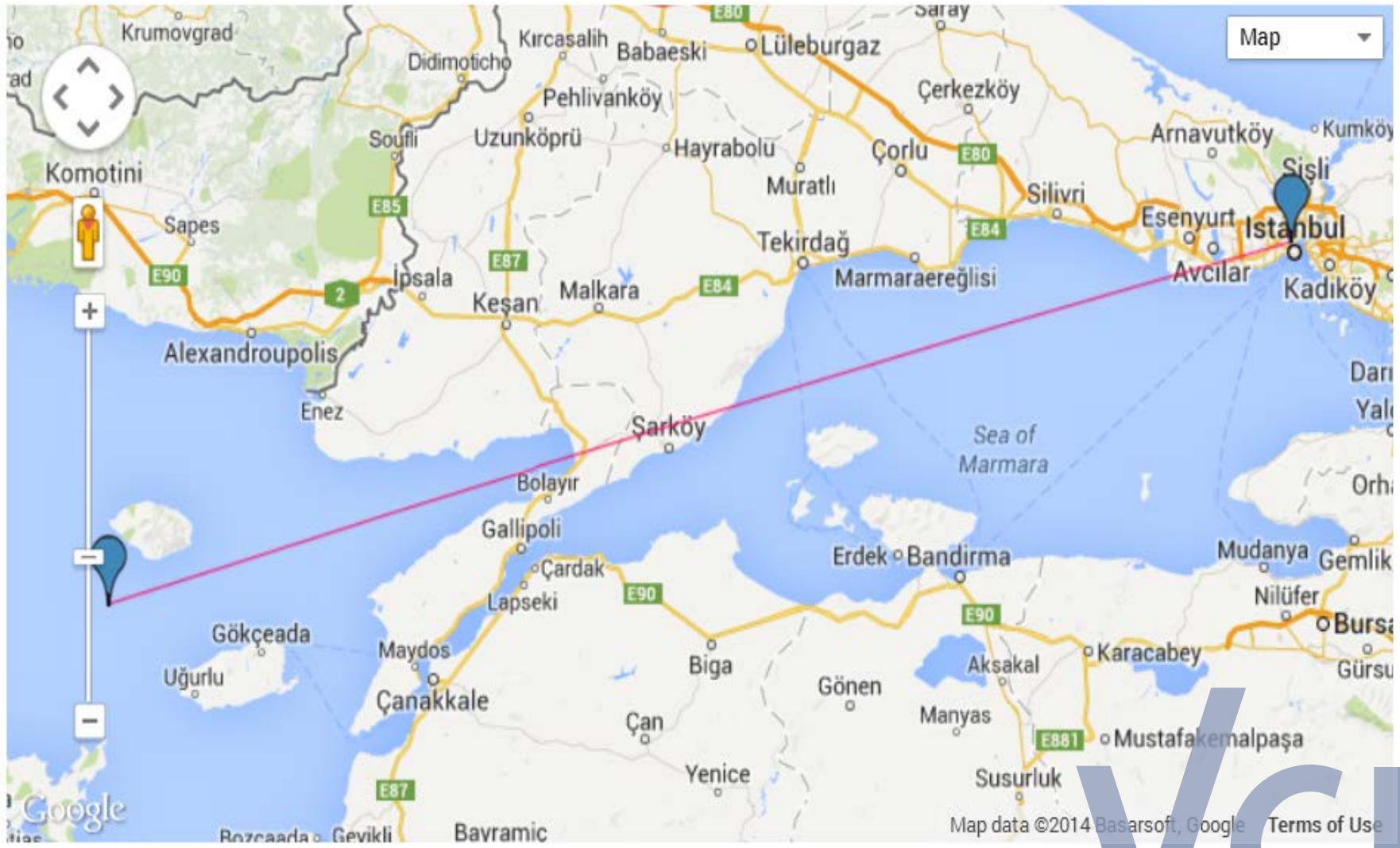
Current Status

- The monitoring system is in place and running since February 2014
- It is a typical Structural Health Monitoring System (not a strong motion station or a scientific experiment)
- VCE took care of fine tuning for 1 year (ended in February 2015)
- System operation by Municipality

VCE

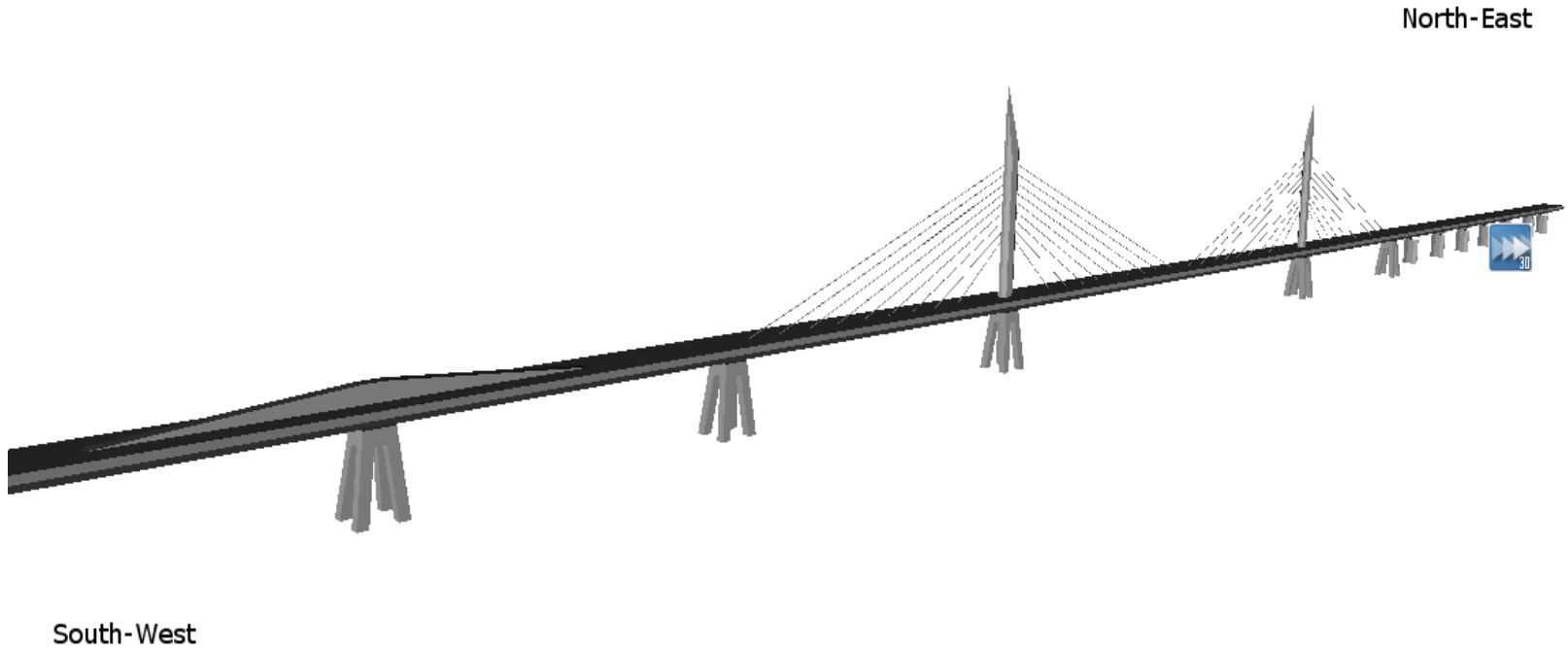
Halic Metro Bridge

Monitoring Facts and Figures



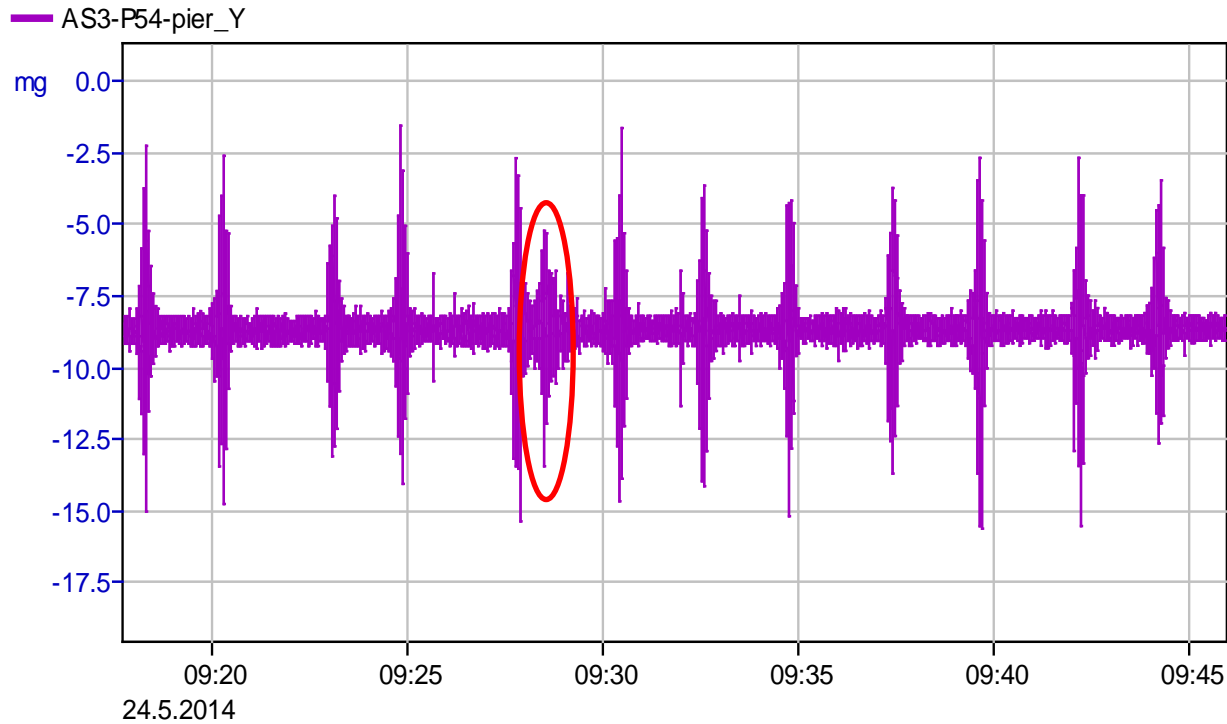
Halic Metro Bridge

Monitoring Facts and Figures



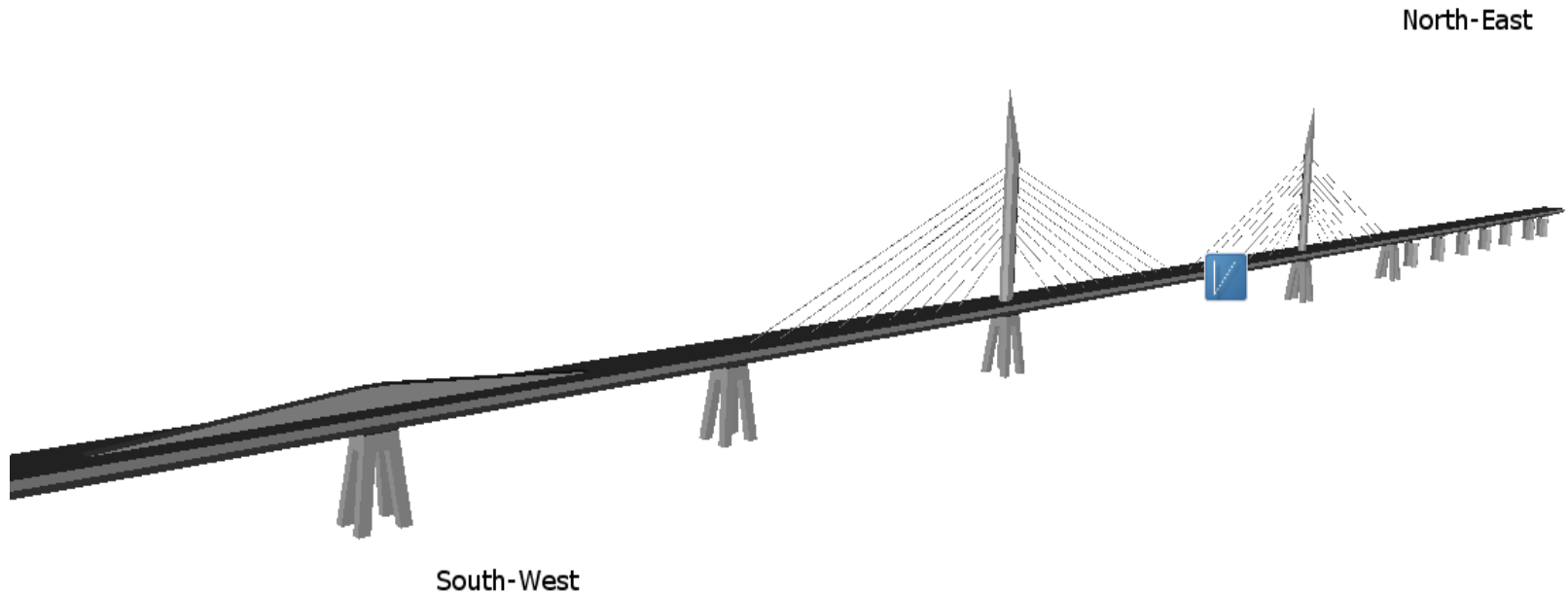
Halic Metro Bridge

Monitoring Facts and Figures



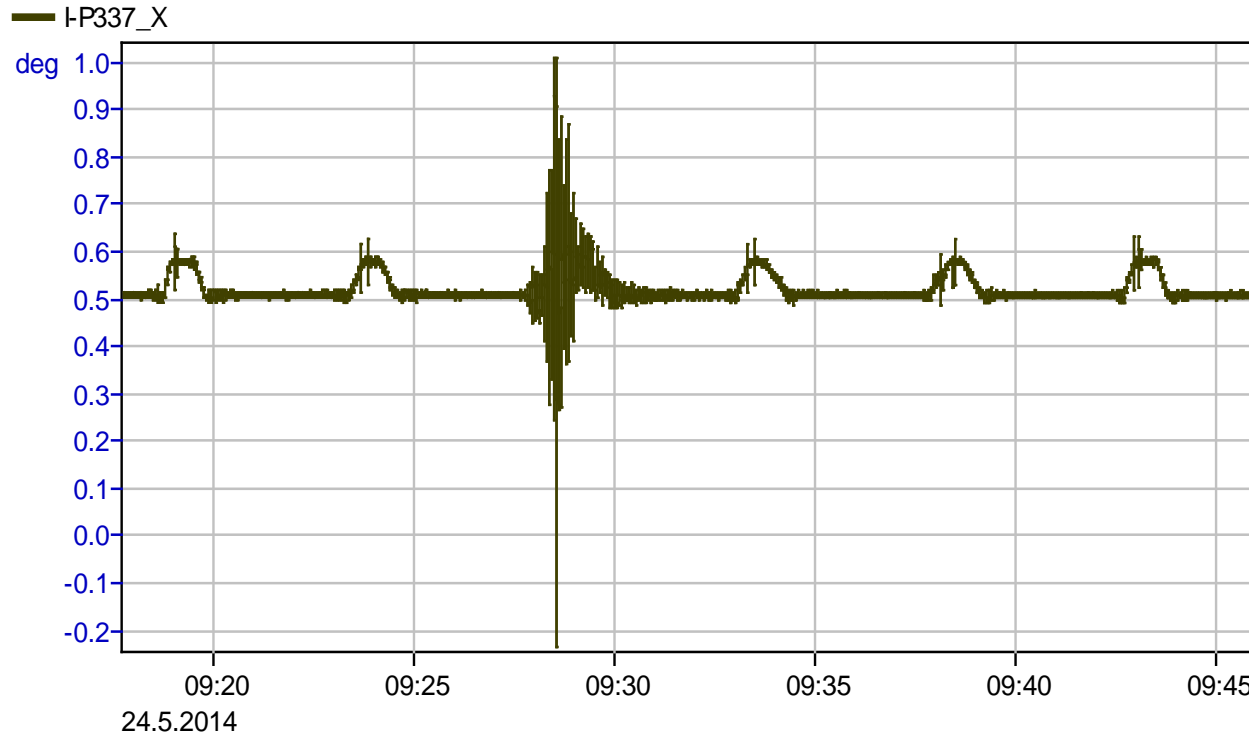
Halic Metro Bridge

Monitoring Facts and Figures



Halic Metro Bridge

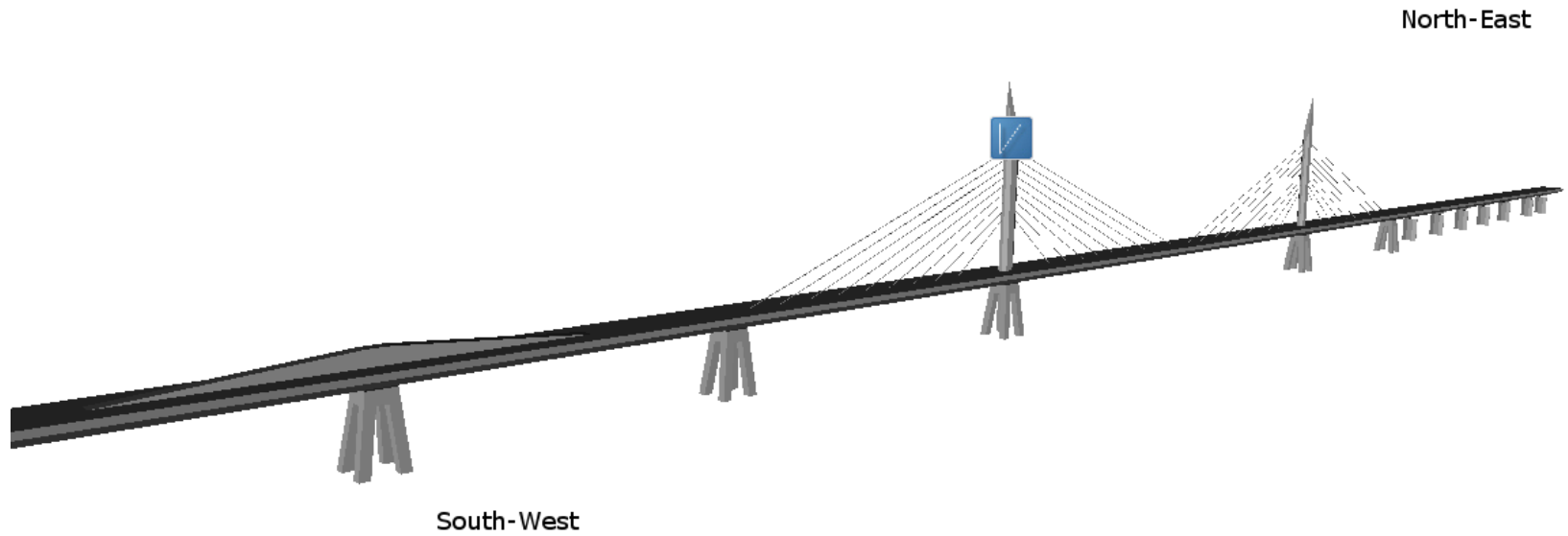
Monitoring Facts and Figures



VCE

Halic Metro Bridge

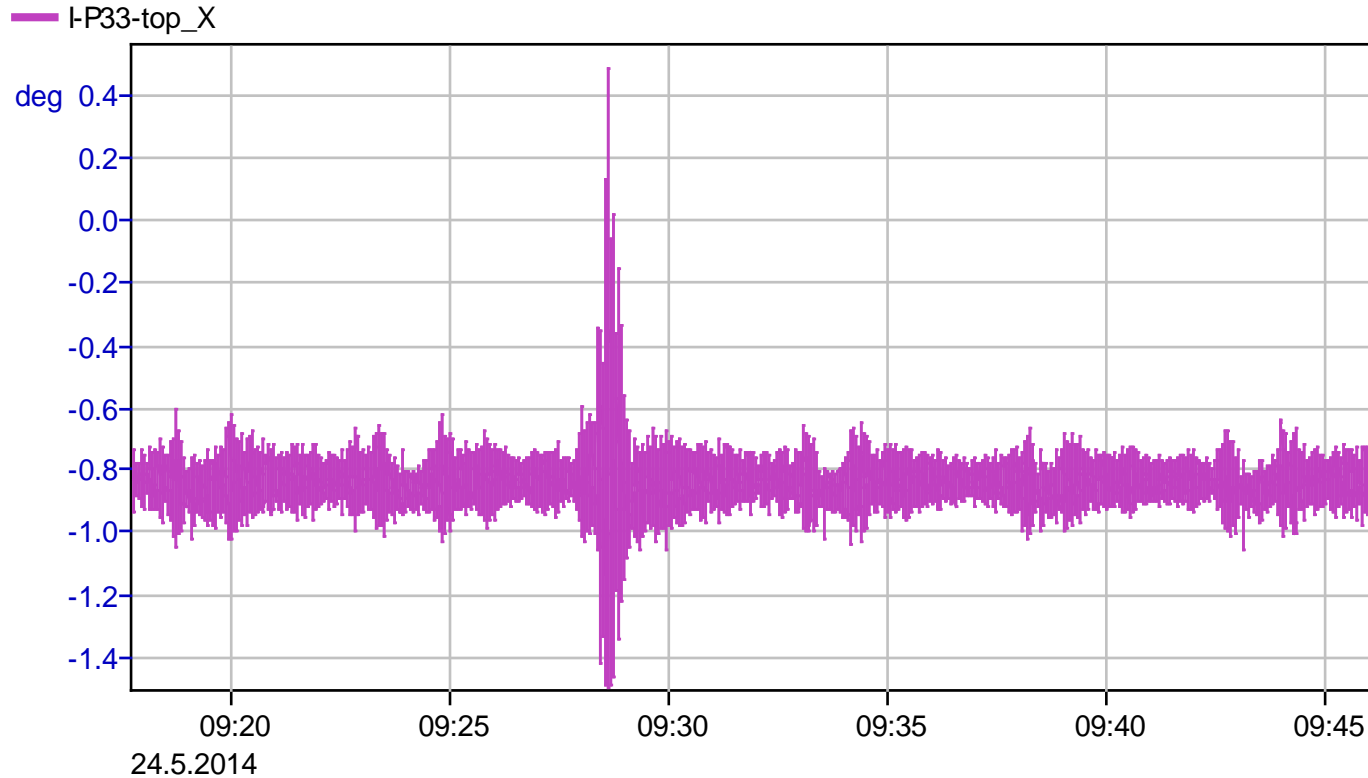
Monitoring Facts and Figures



VCE

Halic Metro Bridge

Monitoring Facts and Figures



Halic Metro Bridge

Construction



Halic Metro Bridge

Construction



3rd Bosphorus Bridge

LOCATION



3rd Bosphorus Bridge

LOCATION



Bekir Kurt

VCE
wowTURKEY

3rd Bosphorus Bridge Monitoring



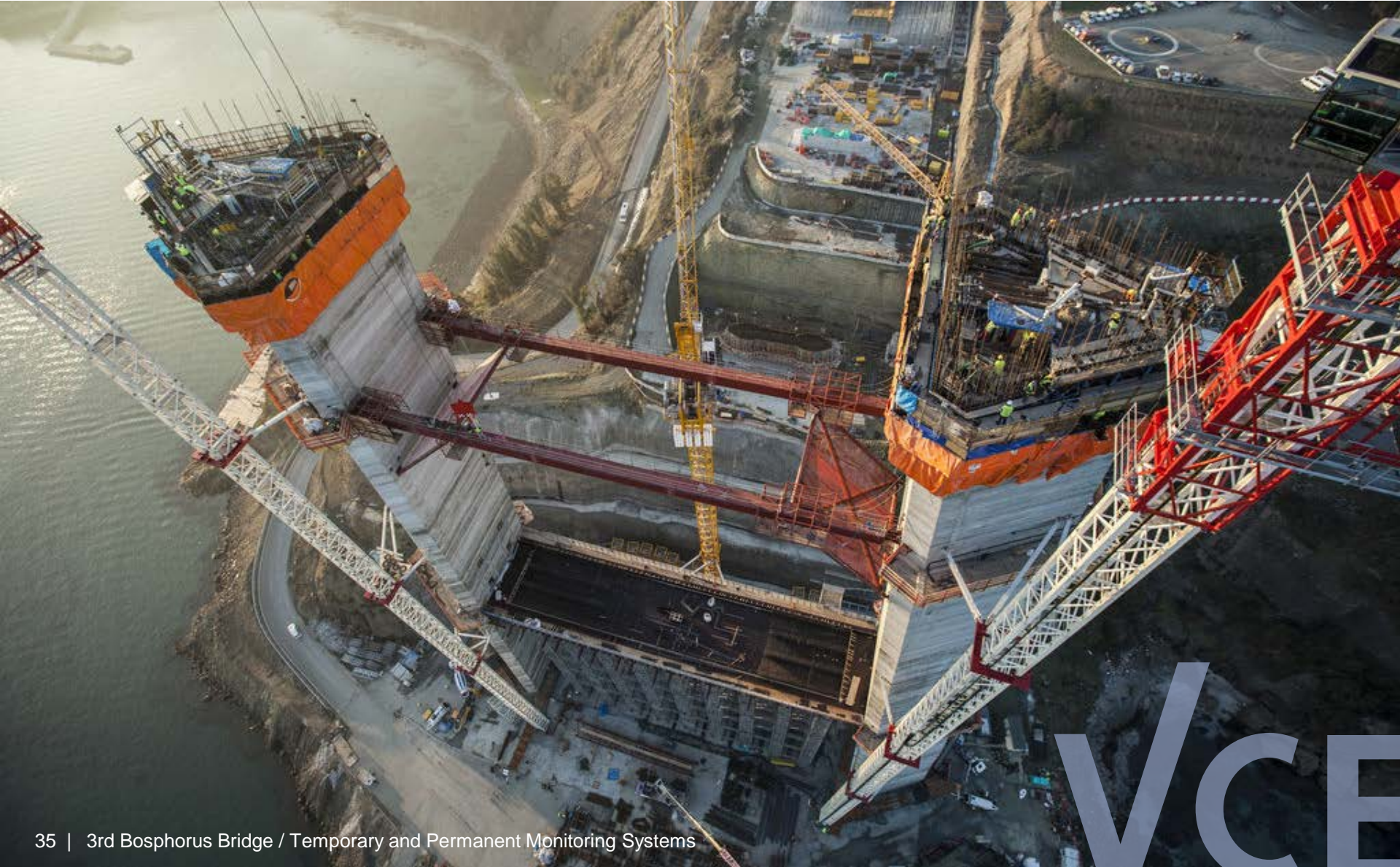
3rd Bosphorus Bridge Monitoring

European Side



3rd Bosphorus Bridge

Construction Stage Monitoring



3rd Bosphorus Bridge

Construction and Monitoring



3rd Bosphorus Bridge

Construction and Monitoring



Izmit Bay Bridge / Gebze – Izmir Motorway Project

Construction Activities 2014 – 2015











Catwalk System



Tramway Rope

Tramway Bent

Hauling Rope

Hand Rope



Transition Span – Deck Erection South (TS08~TS03)
ACTUAL FINISH: 18-JULY-2015

Cable Strand Installation





Cable Strand Installation

ACTUAL START: 7-SEP-2015